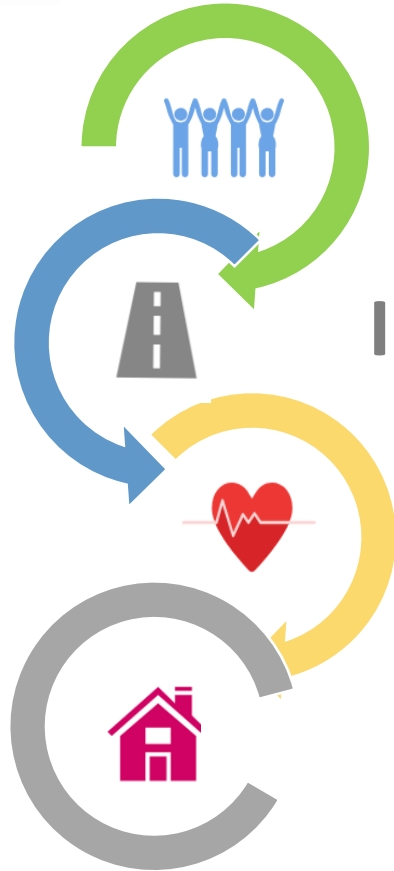




Wiltshire's Community Safety Plan 2019-2022



Increasing community resilience

Reducing vulnerability

Preventing exploitation

Tackling Crime. Protecting Communities.

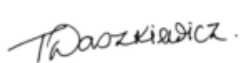


Plan for 2019-2022

Introduction

We are pleased to introduce Wiltshire’s Community Safety Partnership Plan 2019-2022. This plan has been written to ensure we are working together to make our local communities safer and more resilient and help people in Wiltshire live well for longer.

Whilst Wiltshire is a safe county, as a partnership we are not complacent. Work continues to tackle crime and behaviours that impact on vulnerable people and on our communities. With demand on services increasing and the nature of the risks we face changing, we need to think differently and make funding go further. We will work together to tackle the root causes and social determinants that lead to crime. We’ll focus on the places people live in and the issues that affect their lives: housing, isolation, service provision and poverty. By changing the way we think and work, we will make our communities stronger, reduce vulnerability and prevent exploitation.



Tracy Daszkiewicz
Chair of WCSP

Director of Public Health, Wiltshire Council Wiltshire Police



Supt Dave Minty
Vice Chair of WCSP

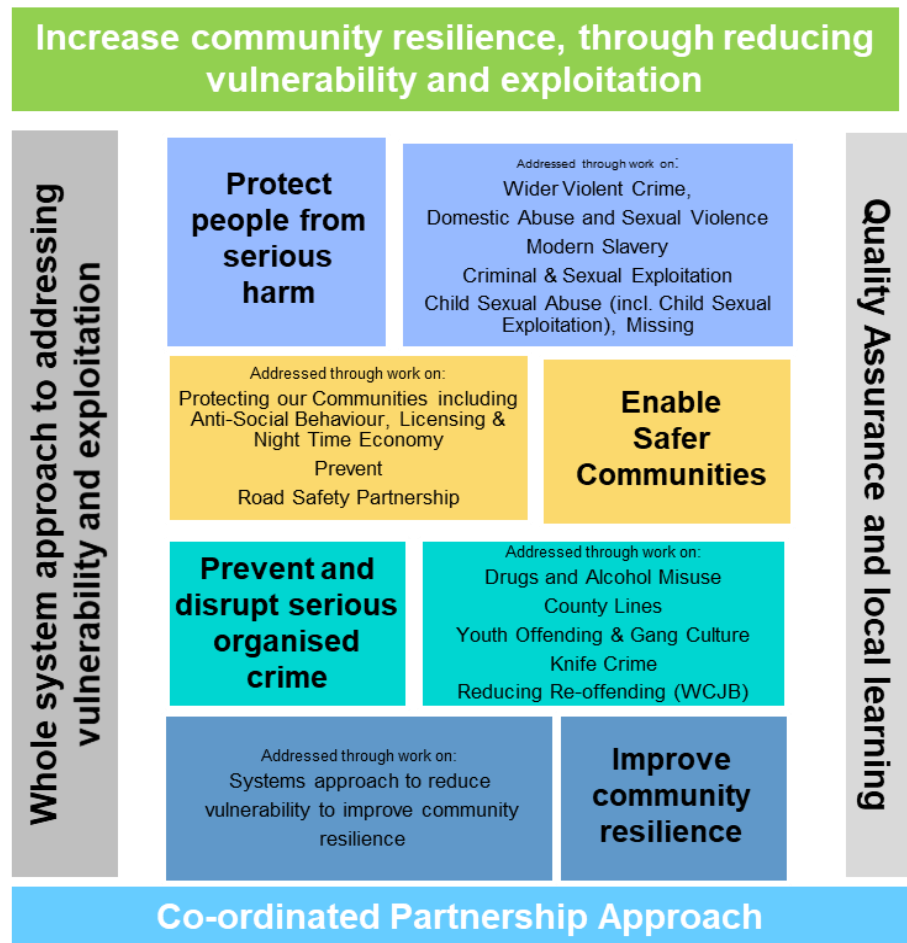
Role and Function

To provide the statutory Crime and Disorder Reduction Partnership for Wiltshire. Its statutory obligations include:

- Framework for sharing information
- Strategic Assessment
- Reduce Re-offending
- Commission Domestic Homicide Reviews

Delivery Framework

Responsible for delivering against the priorities identified in the Control Strategy and in the matrix outlined below.



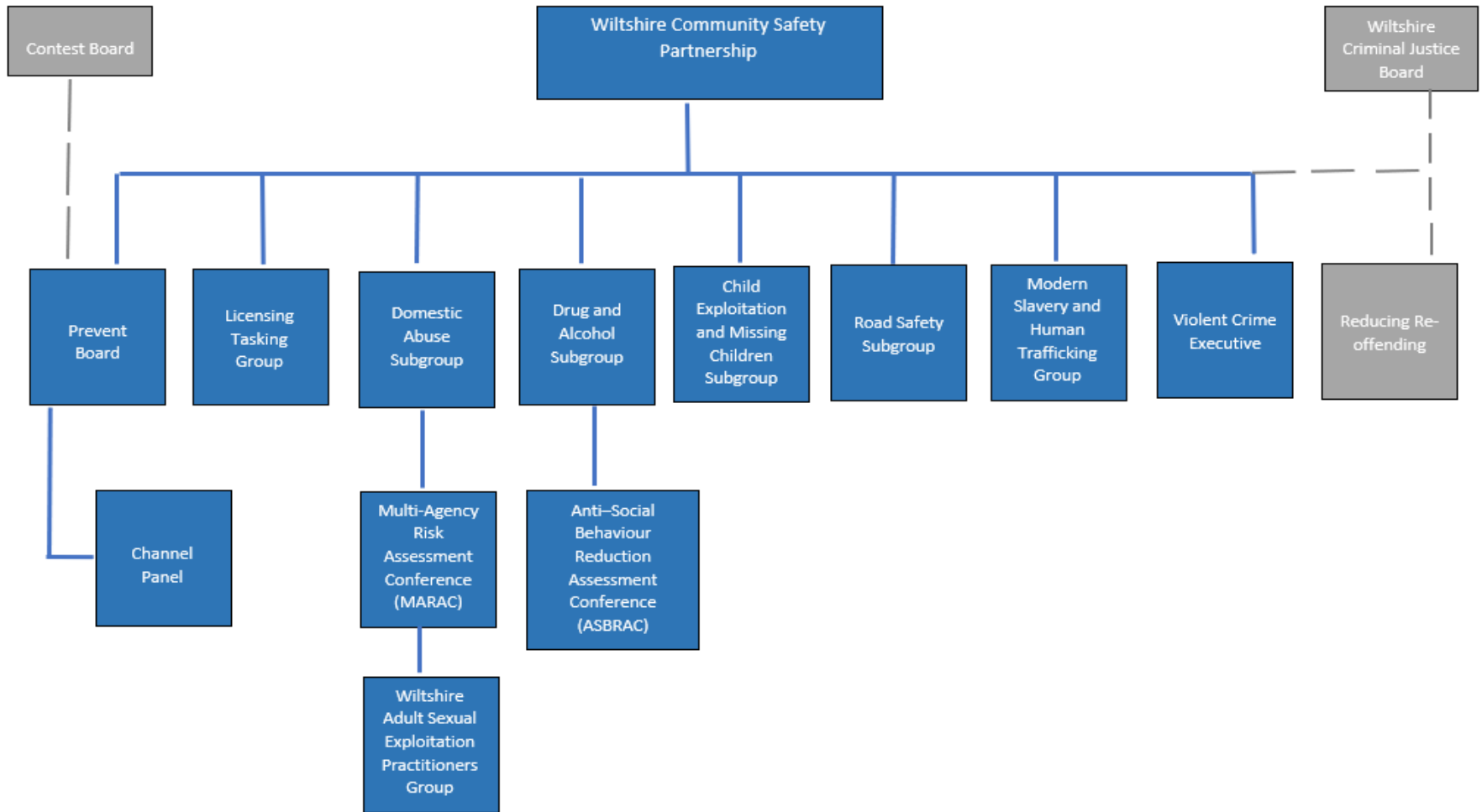
Monitoring

Progress will be reported regularly to the WCSP and inform the Annual Review.



Governance

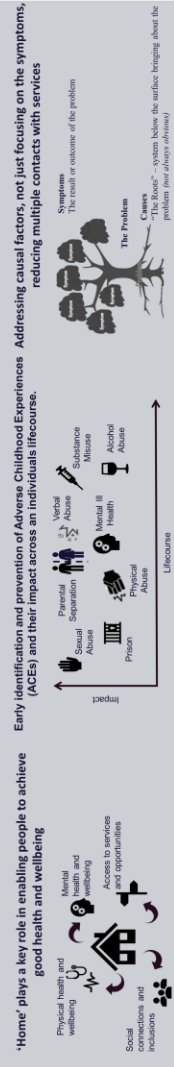
The governance arrangements and thematic workstreams of the Wiltshire Community Safety Partnership (WCSP).



Increasing community resilience through reducing vulnerability and exploitation

All crime has a significant impact on victims, their children, the economy, health and the criminal justice system

Whole-system approach to addressing vulnerability and exploitation



Protect people from serious harm

Reducing crimes that cause the most harm, by focusing on prevention and earlier intervention

- Headlines:
- 3,205 (3,312) domestic abuse incidents reported to the police
 - 1,437 DA incidents identified C&YP present at the time
 - 517 (503) high-risk cases heard at MARAC, including 699 (728) C&YP in the home
 - 49 'on-street' sex-workers identified (33 Swindon and 16 Wiltshire)
 - 96% (of the 49) had links to drugs/alcohol, homelessness, self-harm/suicide and/or learning difficulties
 - 407 (513) children <18yrs reported missing, involving 1,170 (1,360) missing episodes
 - 18 (20) children went missing on at least 12 occasions
 - 58 (39) children at risk of CSE open to the Emerald Team (March 2018)
 - 67,000 adults estimated to have a common mental health disorder; 4.4% of Wiltshire's population suffer from PTSD
- n.b. 2017/18 compared (2016/17)*



Enable Safer Communities

Enabling cohesive and active communities, to be better informed and more likely to experience lower levels of crime and anti-social behaviour

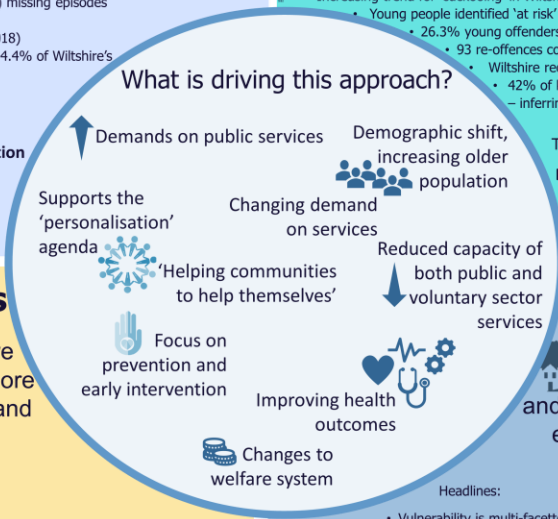
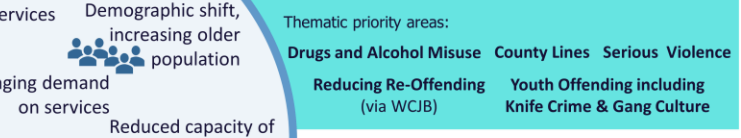
- Headlines:
- 6,892 violent and sexual offences reported to the police in 2015/16
 - The rate of violent and sexual offences per 1,000 people is 14.3 in Wiltshire, which has seen an increase of +6.8 since 2011/12
 - 21 prevent referrals received in 2017/18 (30 2016/17)
 - Wiltshire ASBRAC received 82 referrals; with Salisbury, Melksham and Trowbridge account for 63% referral sources
 - 669 people were killed or seriously injured on Wiltshire's roads between 2013 and 2015
 - 46.2 road accidents per 100,000 residents, compared to the England rate of 38.5



Prevent & Disrupt Serious Organised Crime

Reduce the impacts of organised criminality, often associated with drugs and the harms caused.

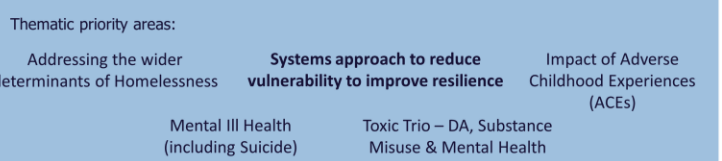
- Headlines:
- 28.7% or 110,100 of adults drink more than recommended amount of alcohol (14units p/wk)
 - Wiltshire's alcohol-related admission rate of 1779 per 100,000 pop (2015/16); up 28% (since 2008)
 - 3,000 people received treatment from Drugs and Alcohol Service (2014/16)
 - Wiltshire School's survey (n=9,500 students) identified 19% drank alcohol more than occasionally
 - 163 young people in Wiltshire received treatment for drugs and alcohol (2017/18)
 - Increasing trend for 'cuckooing' in Wiltshire involving vulnerable people
 - Young people identified 'at risk' of being targeted and enticed into drug running
 - 26.3% young offenders re-offending rate (N=76 tracked for 12mths, from first offence)
 - 93 re-offences committed (12mth) by 20 offenders; 4 offenders committed 48 offences
 - Wiltshire received 357 knife crimes reported to the police in 2017/18
 - 42% of knife crimes involving <18yr olds (Pan County), had a mental health flag
 - inferring a greater correlation than drugs



Improve community resilience

Supporting communities to be stronger and more resilient, to 'bounce back' from the exposure and impacts of vulnerability and exploitation across a lifecourse

- Headlines:
- Vulnerability is multi-faceted, with the potential for it to impact anyone, at any point during a lifetime
 - Some communities are at greater risk
 - Much of the demand on services as a result of exposure to vulnerability is preventable
 - Exposure to multiple vulnerabilities requires a multi-agency response
 - Health impacts are significant, associated with both short-term physical and mental ill health, as well as chronic health conditions lasting over a lifecourse



To work across the whole-life course, to embed local learning identified from safeguarding and domestic-related reviews

Quality Assurance and Local Learning



Strategic Overview

The Wiltshire Community Safety Partnership will measure progress against the outcomes framework illustrated below.

Wiltshire Community Safety Partnership's Plan 2019 – 2022

Vision	Increasing community resilience through reducing vulnerability and exploitation	
Strategic Priority	Strategic Aim	Outcomes
Improved Community Resilience	Embed a whole-systems approach to vulnerability and exploitation, addressing root causes across the life course, focused on prevention in the context of 'place' to support communities to be stronger and more resilient.	<ul style="list-style-type: none"> • Individuals, families and communities report improved health, wellbeing and resilience. • Improved understanding by professionals of the social determinants (incl. Adverse Childhood Experiences) influencing vulnerability and exploitation, to enable earlier intervention.
Protect People from Serious Harm	Reducing the crimes and behaviours that cause the most harm, focusing on prevention and earlier intervention.	<ul style="list-style-type: none"> • Both communities and professionals are better informed to understand, recognise and know how to respond to those identified as at serious risk of harm. • Earlier identification of individuals, families and communities at risk, to access appropriate interventions to support and help overcome the impact the risk has on their lives.
Enable Safer Communities	Enable cohesive and active communities who are better informed, to work together to reduce the impact of low level criminality and anti-social behaviour.	<ul style="list-style-type: none"> • Individuals, families and communities are safer and have access to the resources and skills to remain safe. • Increased awareness of the risk associated with extremism, working in partnership to reduce the risks to individuals, families and communities, through information sharing and earlier intervention.
Prevent and Disrupt Serious Organised Crime	Reduce the impact of serious organised crime and violence often associated with drugs, and the harms caused.	<ul style="list-style-type: none"> • Youth offending and gang culture is reduced, diverting more young offenders away from re-offending. • Reduced health and social impacts of drugs and alcohol use. • Reduced re-offending through diversion and/or disruption.



Delivery

The strategic outcomes will be achieved through the thematic delivery groups and supporting plans.

Theme	Subgroup	Plans
Drugs and Alcohol	<ul style="list-style-type: none"> Licensing tasking group Drugs and Alcohol Subgroup 	Drugs and Alcohol strategy to be developed in 2019
Domestic Abuse	<ul style="list-style-type: none"> Domestic Abuse Subgroup MARAC 	Wiltshire Domestic Abuse and Sexual Violence Strategy
Exploitation	<ul style="list-style-type: none"> Wiltshire Adult Sexual Exploitation Practitioners' (WASEP) group Child Exploitation and Missing Children Subgroup 	Wiltshire Child Exploitation and Missing Children Strategy
Road Safety	<ul style="list-style-type: none"> Road Safety Subgroup 	Road Safety strategy to be developed in 2019
Serious and Organised Crime	<ul style="list-style-type: none"> Modern Slavery and Human Trafficking group Child Exploitation and Missing Children Subgroup 	Serious and Organised Crime plan currently under review, following a 4P approach.
Anti-Social Behaviour	<ul style="list-style-type: none"> Licensing tasking group ASBRAC 	
Radicalisation	<ul style="list-style-type: none"> Contest Board Prevent Board Channel Panel 	Prevent Delivery Plan
Serious Violence	<ul style="list-style-type: none"> Violent Crime Executive group 	Pan-county Strategic Framework in development.